

EASTRIDGE COURT NORTH

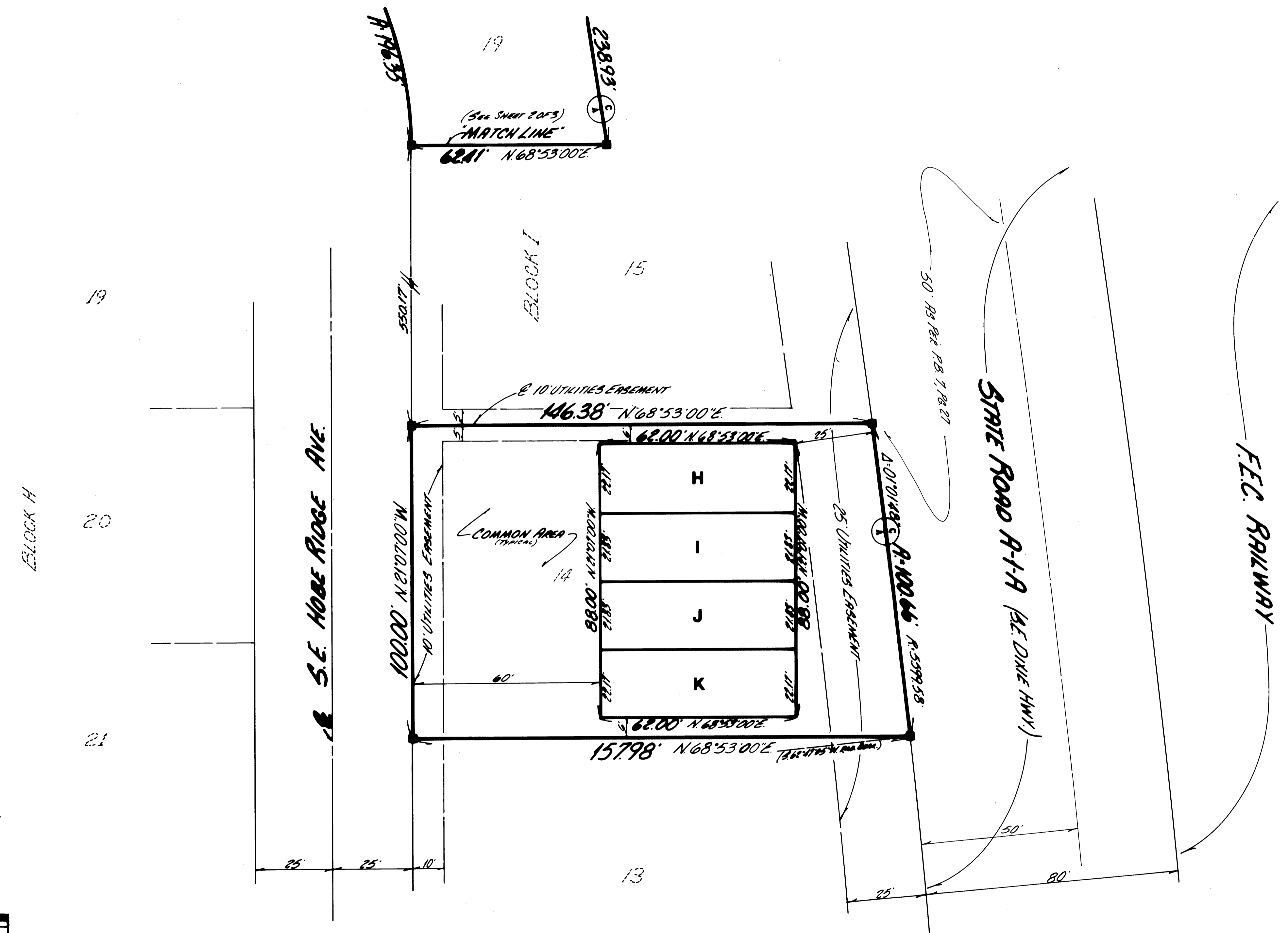
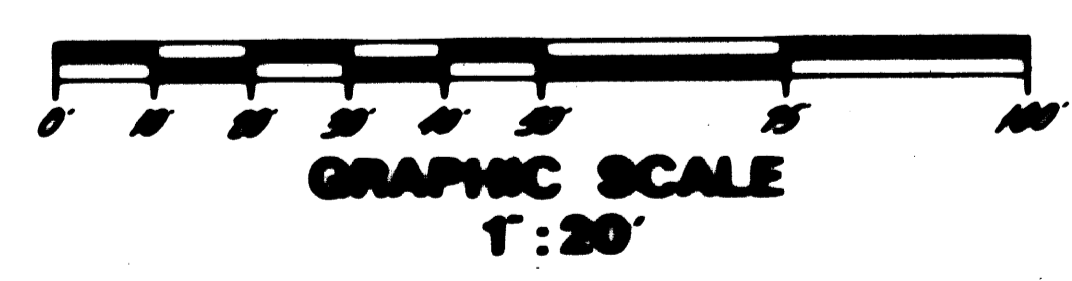
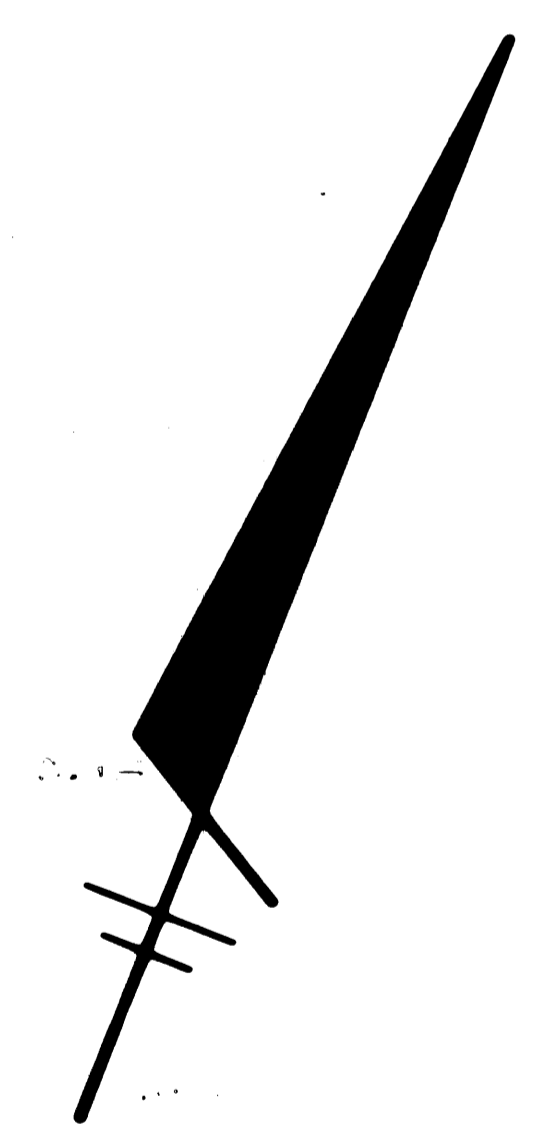
A REPLAT OF LOTS 14, 19, AND 20, BLOCK I, PLAT OF EASTRIDGE ESTATES,
PLAT BOOK 7, PAGE 27, MARTIN COUNTY, FLORIDA.

I, MARSHA STILLER, CLERK OF THE
CIRCUIT COURT OF MARTIN COUNTY,
FLORIDA HEREBY CERTIFY THAT THIS
PLAT WAS FILED FOR RECORD IN PLAT
BOOK 10, PAGE 76, MARTIN
COUNTY, FLORIDA, PUBLIC RECORDS,
THIS DAY OF , 19

MARSHA STILLER
CLERK, CIRCUIT COURT
MARTIN COUNTY, FLORIDA

FILE NO. _____ BY: _____
DEPUTY CLERK

134610



SHEET 3 OF 3

DANEY AND ASSOCIATES
LAND SURVEYORS
4115 WEST INDIANTOWN ROAD
JUPITER, FLORIDA 33458
PHONE: (561) 748-8424